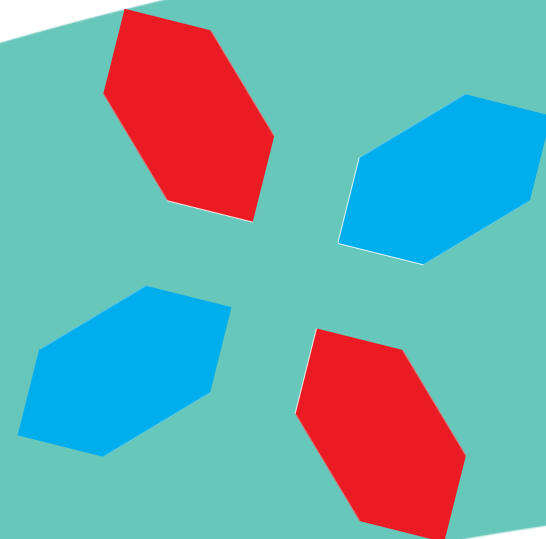


Estonian virtual work and career fair 2025



DA SILVA Sandy
EURES and jobseeker advisor
Luxembourg employment agency

Contact: eures@adem.etat.lu

10th of April 2025

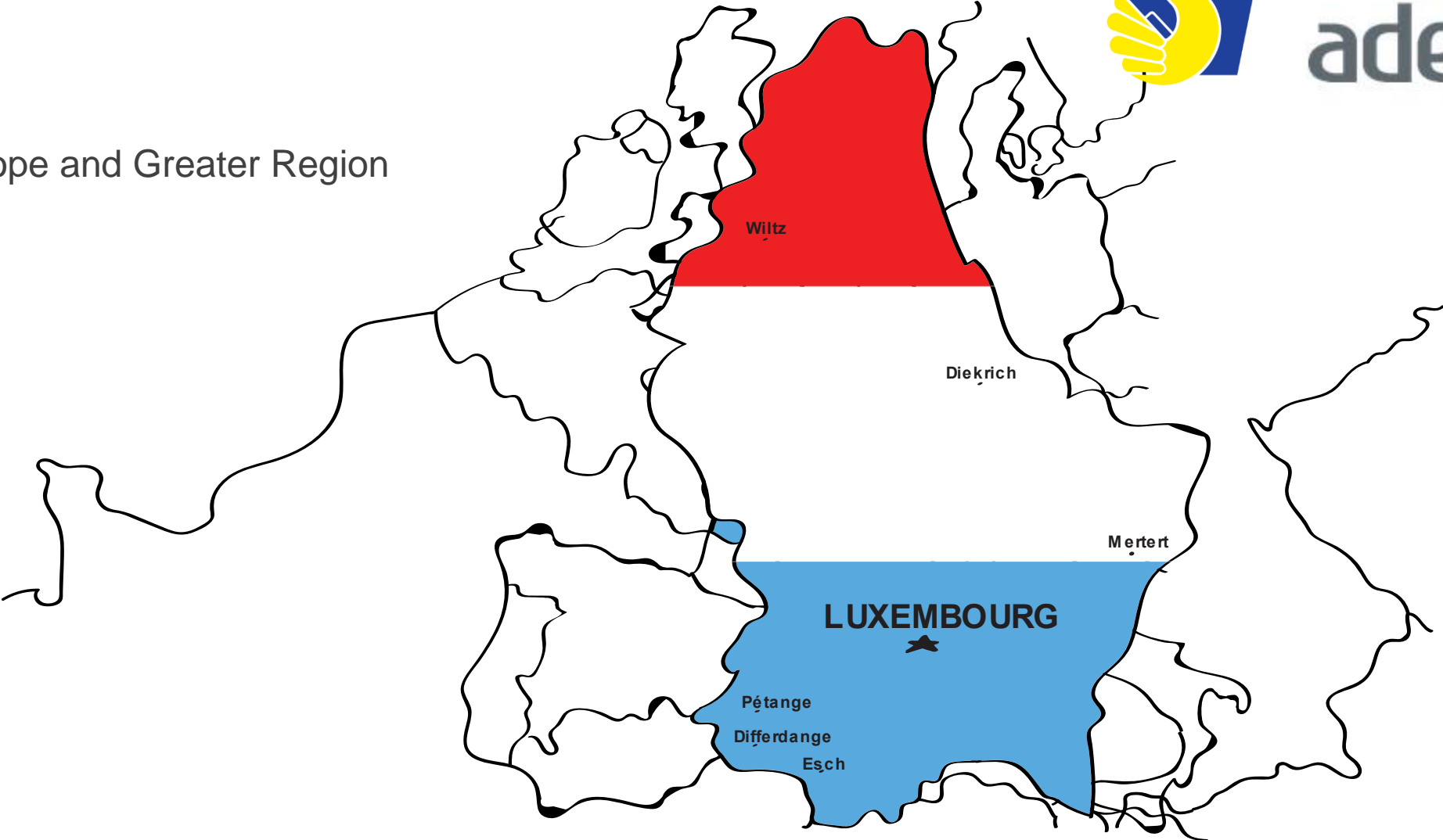


Living and working in
Luxembourg

LUXEMBOURG: ON A MAP



In the centre of Europe and Greater Region



LUXEMBOURG: SOME FACTS & FIGURES



Second smallest country in the EU

- Area of **2,586 km²**

Population: **672.000** inhabitants

- **180** nationalities

3 official languages : Luxembourgish, French, German

- English and Portuguese widely spoken and necessary in certain business sectors

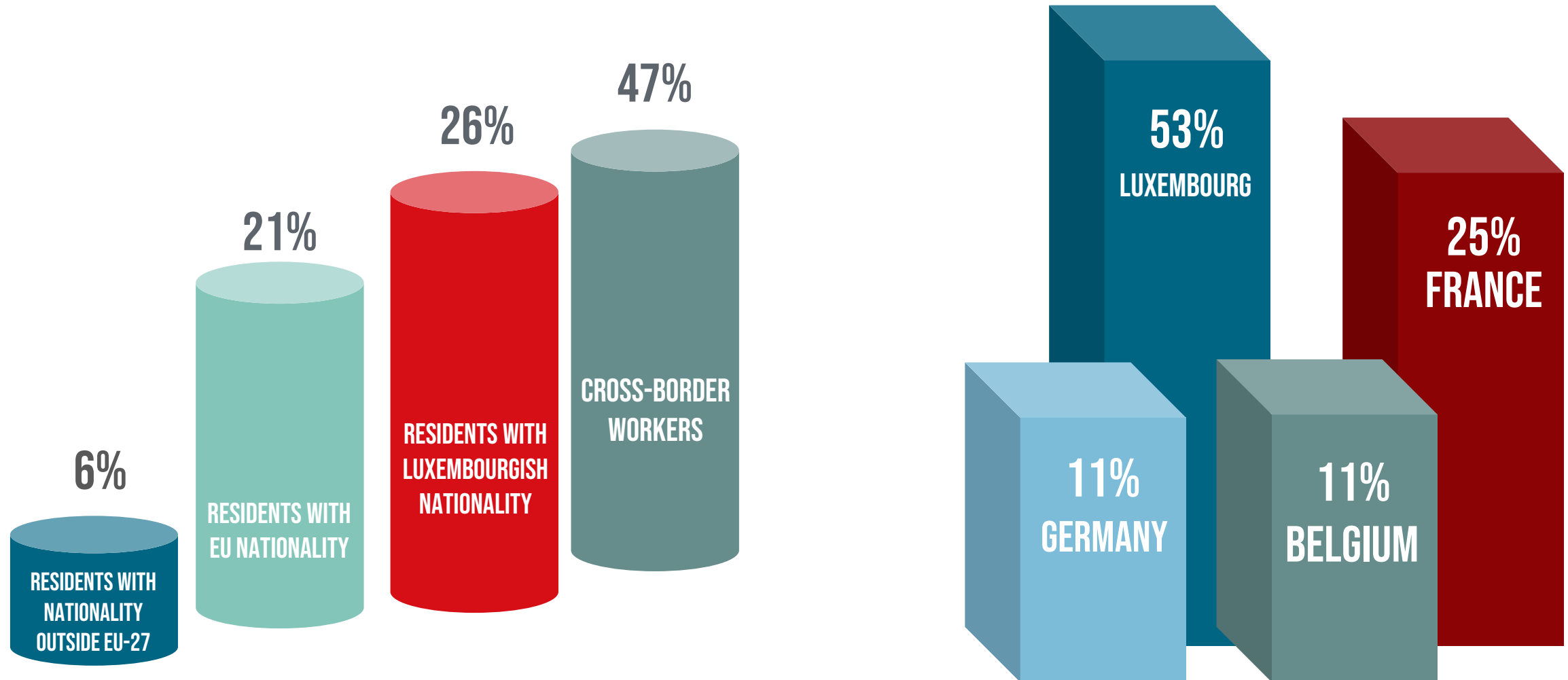
Free public transport

Percentage of foreigners in LU: **47%**

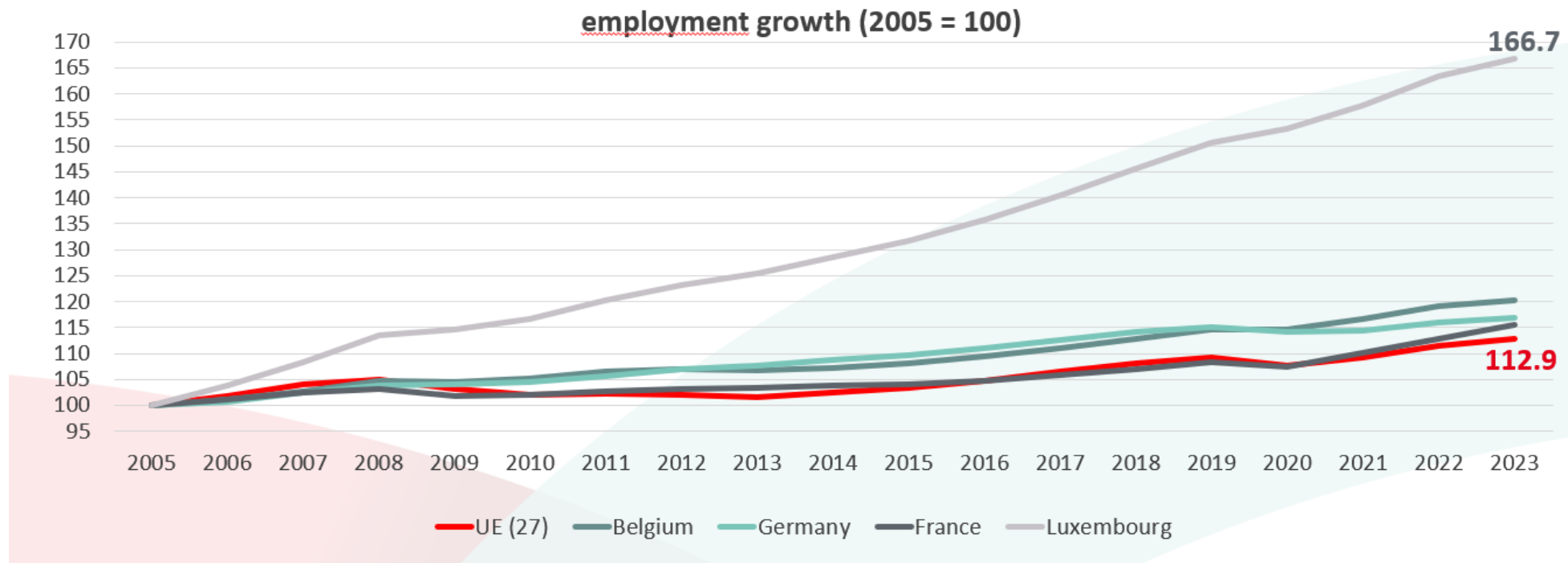
Total	672.100
➤ Luxembourgers:	354.400
➤ Foreign residents:	317.700
Including among others:	
➤ Other EU:	245.600
➤ Other:	72.100

During the past 20 years, population has increased by more than **47%** mainly due to immigration

EMPLOYMENT BY NATIONALITY AND COUNTRY OF RESIDENCE (2023 Q4)

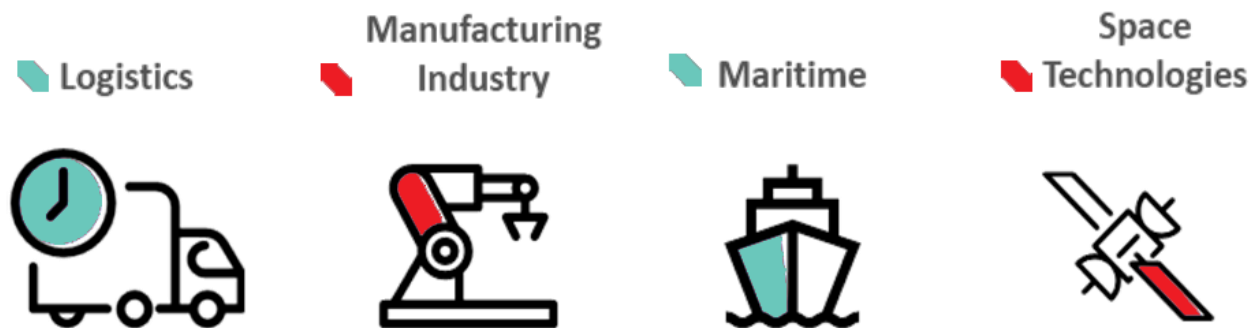


A SOUND AND COMPETITIVE LABOUR MARKET



Since 2005, employment in Luxembourg has increased by almost 70%!

BUSINESS LANDSCAPE AND PRIORITY SECTORS



- This is Luxembourg:
- Diverse technology sectors
 - Highly competitive service sector
 - Flourishing Start-up community
 - Strong SME sector

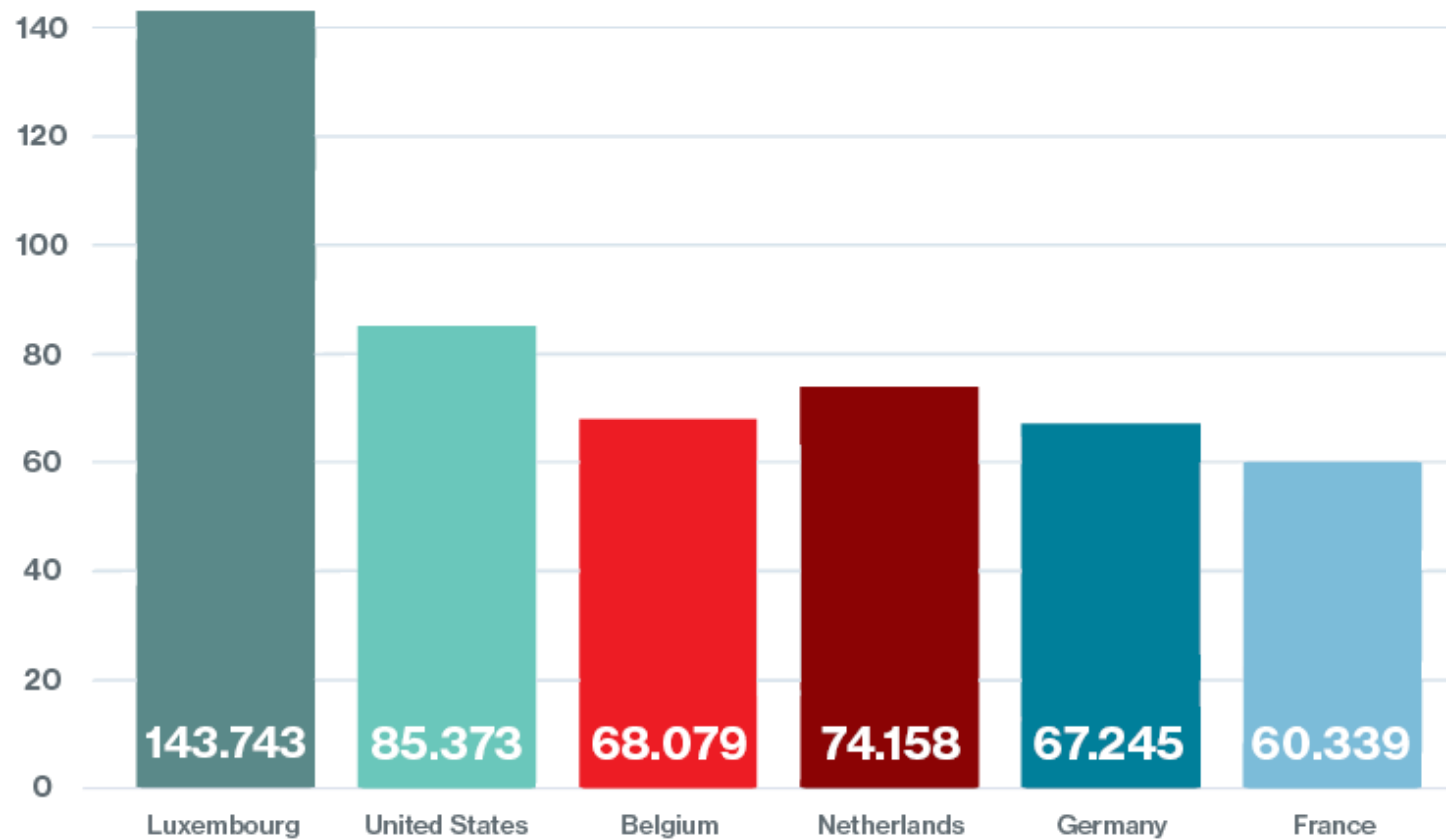
Global brands and important R&D actors (examples)



A THRIVING ECONOMY



PROJECTED GDP PER CAPITA 2024 (IN USD)



Source: International Monetary Fund, 2024

REASONS FOR TAKING UP EMPLOYMENT IN LUXEMBOURG



Statutory minimum wage, lower social security contributions, higher net income

Social benefits (especially family benefits)

Requirements
Languages

Applications

Requirements
Education and training

- Minimum wage is regularly adjusted to the cost of living
- Depending on age and qualification level

Age	Gross monthly salary (January 2025)
≥ 18 years, No recognised professional qualification	2 637,79 €/month (100%)
≥ 18 years with recognised professional qualification - Diploma - Completed vocational training - ≥ 10 years working in Luxembourg recognised professional experience	3.165,35 €/month(120%)

REASONS FOR TAKING UP EMPLOYMENT IN LUXEMBOURG



Statutory minimum wage, lower social security contributions, higher net income

Social benefits (especially family benefits)

Requirements
Languages

Applications

Requirements
Education and training

Social security contributions (employees)

Luxembourg

Health insurance:

3,05 % :

Pension insurance:

8 %

Long-term care insurance:

1,4 %

Unemployment insurance:

∅

REASONS FOR TAKING UP EMPLOYMENT IN LUXEMBOURG



Statutory minimum wage, lower social security contributions, higher net income

Social benefits (especially family benefits)

Requirements
Languages

Applications

Requirements
Education and training

Family allowances

- per child/per month **€299.86**

Age increases (per child)

- aged from 6 to 11: **€22.67**
- aged from 12 years on: **€56.57**

Special supplementary allowance **€200.00**

School starting allowance (per child)

- from 6 to 11 years old **€115.00**
- from 12 years on **€235.00**

Childbirth allowance (3 installments)

- amount per installment **€580.03**

Study grant for children

Attractive pension system



THE LANGUAGES



Statutory minimum wage, lower social security contributions, higher net income

Social benefits (especially family benefits)

**Requirements
Languages**

Applications

Requirements
Education and training

Administrative languages

- Luxembourgish
- French
- German



The language profiles most in demand on the Luxembourg job market

- F / UK
- L / F / GER / (UK)
- F / GER / UK
- F / GER
- UK / GER / (F)
- F / NL / UK
- L / F / GER / POR
- F / UK / ES / I



JOB SEARCH IN LUXEMBOURG



Statutory minimum wage, lower social security contributions, higher net income

Social benefits (especially family benefits)

Requirements
Languages

Applications

Requirements
Education and training

- Due to the international workforce of many companies and the different cultural and educational backgrounds of recruiters, there are no fixed standards for applications.
- Therefore: Pay close attention to the job offer and the requirements formulated therein
- Unless otherwise required, a cover letter and a qualified CV with a current photo are sufficient
- Application documents must be written in the language of the job offer



JOB SEARCH IN LUXEMBOURG



Statutory minimum wage, lower social security contributions, higher net income

Social benefits (especially family benefits)

Requirements
Languages

Applications

Requirements
Education and training



Tip:

On the ADEM website you will find a guide in **(German, French and English)** with tips and examples on how to write a CV

➤ www.adem.lu

Rubric: Jobseekers / Applying for a job

BOTTLENECK VACANCIES

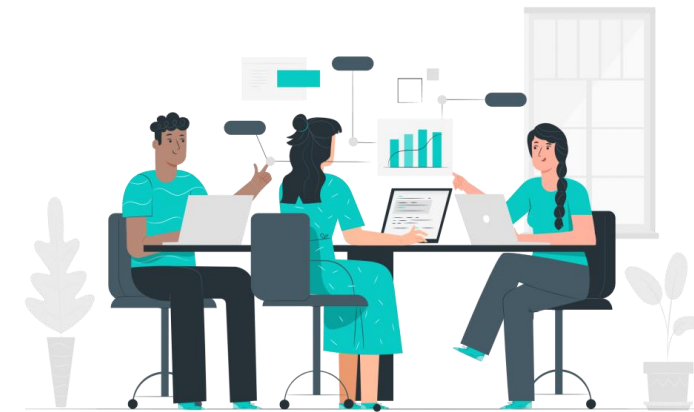


In certain professions, more job offers than candidates are available:

- Credit and banking risk analysis/ Banking customer management
- Management Consultants
- Industrial mechanical maintenance
- Aircraft Maintenance
- Bodywork Repair
- Railway Network Traffic Agents
- General nursing care
- Social work
- Early childhood education
- Defense and legal counseling
- Accounting
- Expertise and support in information systems
- ...

Check the list of professions in very high demand:

<https://adem.public.lu/en/actualites/adem/2025/03/metiers-penurie.html>



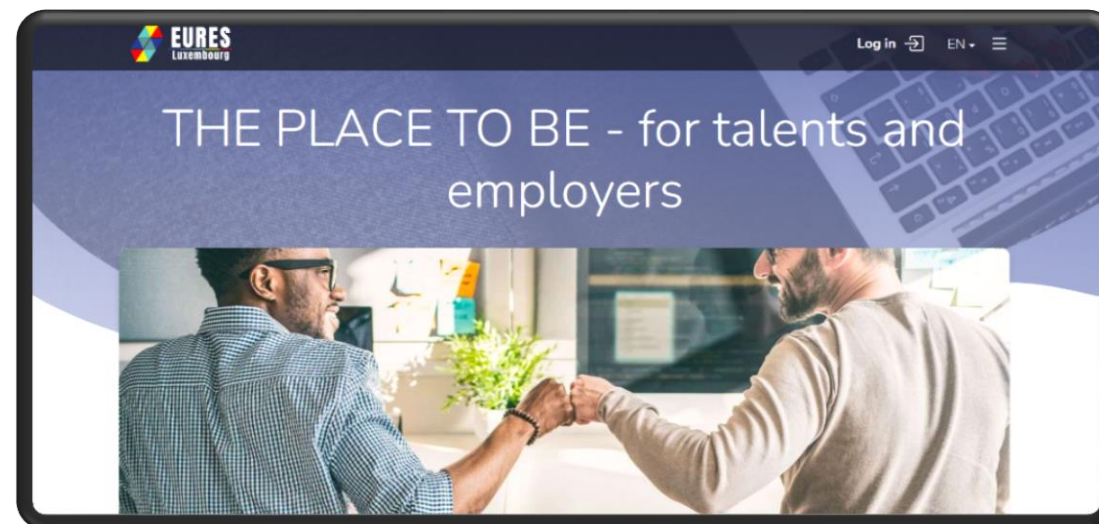
LOOKING FOR A JOB IN LUXEMBOURG



The recruitment platform "work-in-Luxembourg.lu" for skilled workers from all over the world is operated jointly by EURES Luxembourg and ADEM.

Here you will find all current job vacancies in high-demand professions.

Furthermore, dedicated online job days are organized on this platform.



<https://work-in-luxembourg.lu/en>

LOOKING FOR A JOB IN LUXEMBOURG




The platform “JobInsights.lu” is an interactive online platform developed by ADEM in Luxembourg

The platform offers:


- Insights into employment opportunities across various sectors
- Detailing required qualifications, experience, language skills, and competencies
- Facilitating the alignment of skills with job market demands

<https://www.jobinsights.lu/>



Découvrez notre nouveau tableau de bord interactif basé sur les opportunités d'emploi déclarées à l'ADEM! Explorez y les tendances du marché luxembourgeois, les jobs en vogue, leurs exigences, les secteurs en demande... et bien plus encore !

Plongez dans JobInsights dès maintenant !



Lancer la démo

Pour accéder aux offres d'emploi ou aux profils des candidats actuellement disponibles à l'ADEM, rendez-vous directement sur le [JobBoard](#)

MORE JOB OPPORTUNITIES



Statutory minimum wage, lower social security contributions, higher net income

Social benefits (especially family benefits)

Requirements
Languages

Applications

Requirements
Education and training

- Unsolicited applications: list of employers by sector, e.g. FEDIL (Industry), ABBL (Finance), HoResCa
- Edituspro (pages jaunes)
- Online recruitment platforms, newspapers, etc.
- Recruitment agencies / temporary sector
- Interim: 60% of temporary workers land permanent or fixed-term contracts
- Personal contacts

USEFUL LINKS



Statutory minimum wage, lower social security contributions, higher net income

Social benefits (especially family benefits)

Requirements
Languages

Applications

Requirements
Education and training

List of employers by sector (extract)

- <http://www.statec.public.lu/fr/index.html>
- <http://www.cssf.lu> (Finance)
- <http://www.abbl.lu> (Finance)
- <http://www.fedil.lu> (Industry)
- <http://www.horesca.lu> (Catering hotel industry)
- <http://medination.lu> (Health and social work)

Job offers

- <http://europa.eu.int/eures/index.jsp>
- <https://work-in-luxembourg.lu/en>
- <http://www.monster.lu>
- <http://www.jobfinder.lu>
- <http://www.jobs.lu>
- <http://www.moovijob.com/>
- Luxemburger Wort (Saturday edition)

Pages jaunes

- <http://www.editus.lu>

PROFESSIONAL QUALIFICATIONS



Statutory minimum wage, lower social security contributions, higher net income

Social benefits (especially family benefits)

Requirements
Languages

Applications

Requirements
Education and training

Because of the cross-border employment market and the international environment, many diplomas, professional qualifications, etc. can be found on the Luxembourg market.

➤ Equivalence of diplomas

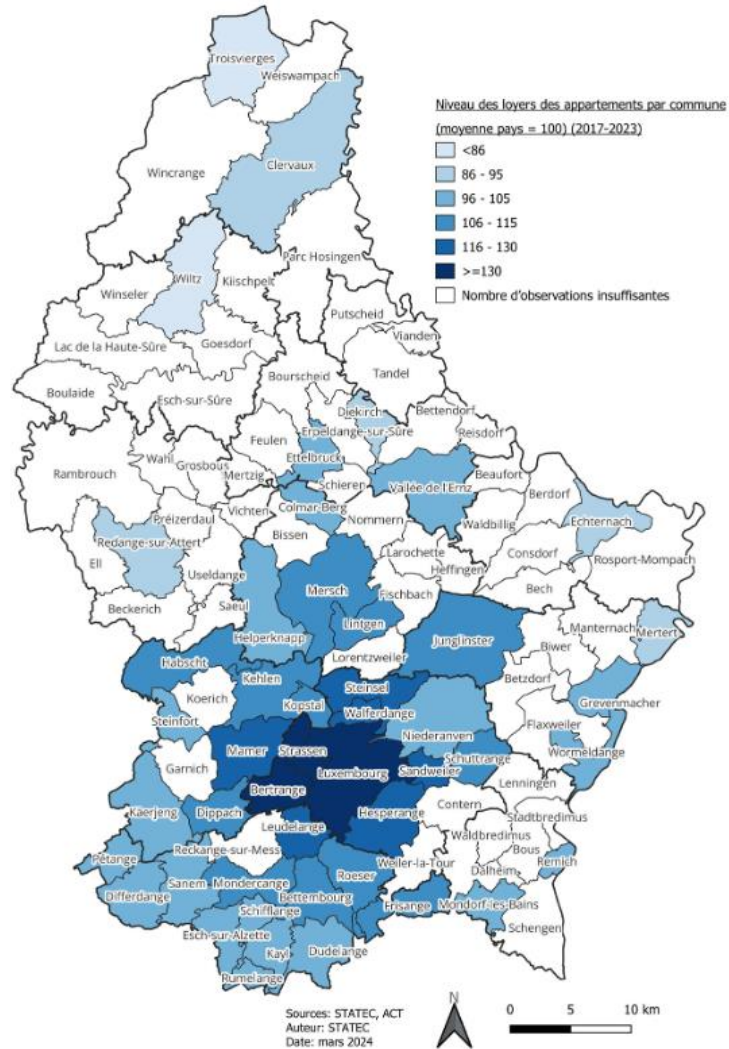
Ministry of Education, Children and Youth
www.men.lu

➤ Approval of university diplomas

Ministry of Research and Higher Education
<https://mesr.gouvernement.lu/fr>



HOUSING IN LUXEMBOURG



Average rent/m2:

- Luxembourg city: **39,34€**
- Wiltz: **18,42€**
- Diekirch: **20,96€**
- Differdange: **25,66€**
- Grevenmacher: **20,53€**

➤ Real rents fall as you move away from the city

*Source: Ministry of Housing and Spatial Planning, 2023/2024

Luxembourg: LET'S MAKE IT HAPPEN!



Society and culture Living Visit Work and study Invest



> Work and study

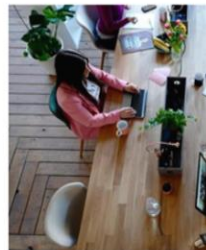
Work and study

<https://luxembourg.public.lu/en/work-and-study.html>

Employment in Luxembourg



Luxembourg attracts international talent



Coworking spaces in Luxembourg



Craftsmanship, the driving force of the Luxembourg economy



Skilled crafts - employment and transfer of know-how



5 key pointers for cross-border workers in Luxembourg

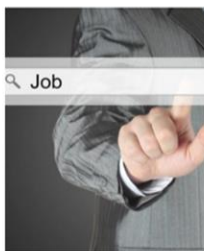


Languages at work: French prevails



Start your own business in Luxembourg - achieve your professional goals!

Studying in Luxembourg



Calling all digital enthusiasts!



Breaking codes at École 42!



Entrepreneurial education by the association Jonk Entrepreneuren Luxembourg



Entrepreneurial education: when school projects turn into successful start-ups



Training in the skilled crafts sector



University students - budding entrepreneurs



Recognition of foreign school and higher education diplomas

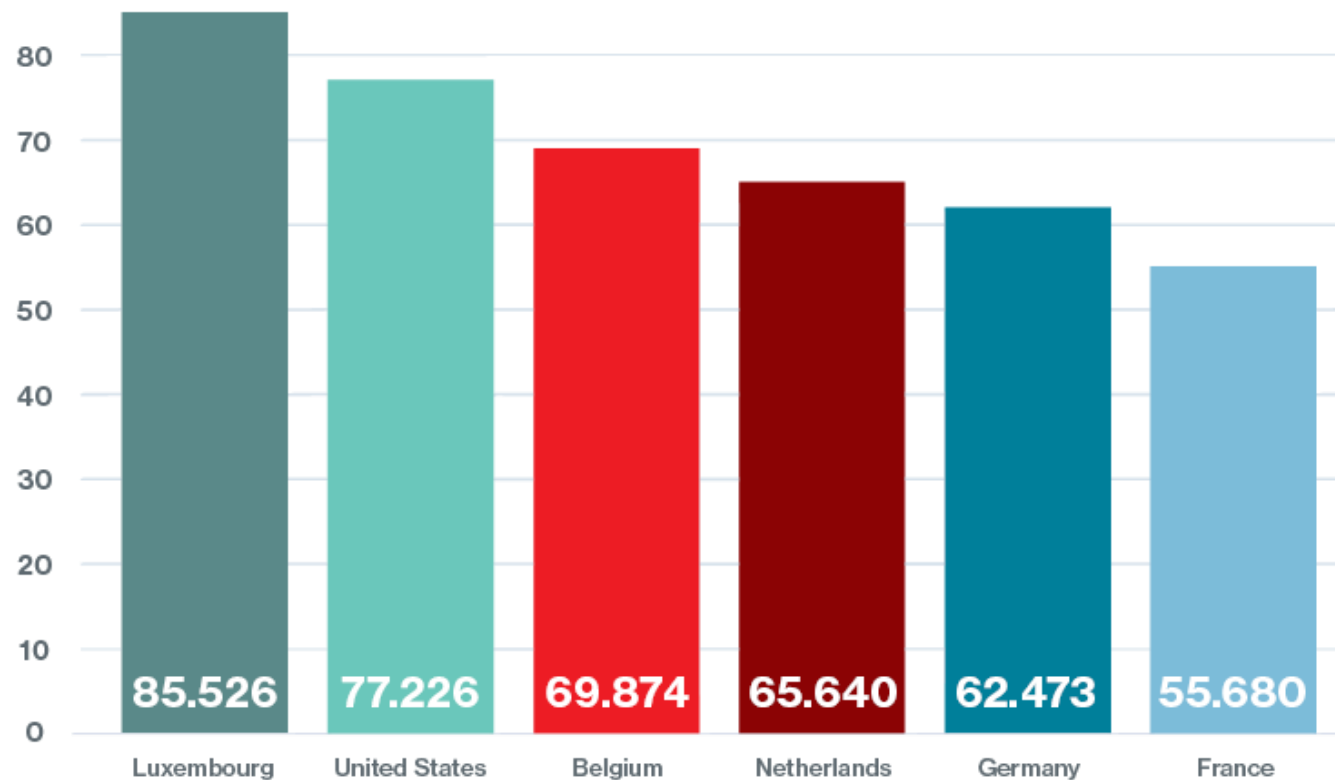


Why Luxembourg?

ATTRACTIVE SALARIES



AVERAGE ANNUAL WAGES 2023 (IN USD)



Source: OECD, 2023



A STABLE AND SAFE ENVIRONMENT

FOCUS

✖ Nearly 90% of current jobs are covered by permanent contracts.

ATTRACTIVE SOCIAL BENEFITS



**HEALTHCARE
BENEFITS**



FAMILY ALLOWANCE



MATERNITY BENEFITS



PARENTAL LEAVE



**RETIREMENT
BENEFITS**



**UNEMPLOYMENT
BENEFITS**

GREAT PLACE TO LIVE



Cultural attractions:

- Museums : MUDAM, the National Museum of History and Art, and the Luxembourg City History Museum
- Music & Festivals: Atelier, Rockhal, Philharmonie Luxembourg
- Historical Walks: Old Town of Luxembourg City, a UNESCO World Heritage

Outdoor Activities:

- Hiking & Nature: Müllerthal Region (little Switzerland), the Ardennes
- Parks & Lakes
- Castles & Historical Sites

MORE DETAILED INFORMATION



Living and working (e.g.)

- <http://www.adem.lu>
- www.work-in-luxembourg.lu
- <http://www.guichet.lu>
- <http://eures.europa.eu>
- <https://www.eures-granderegion.eu/de>
- <https://itm.public.lu/fr.html>
- <https://www.euraxess.lu/>
- <https://www.csl.lu/fr/>
- <http://www.luxembourg.lu>
- http://www.mss.public.lu/publications/parametres_sociaux/
- <http://www.grande-region.net>

Statistics (e.g.)

<http://www.statec.lu/>

Social security:

<http://www.cnap.lu>

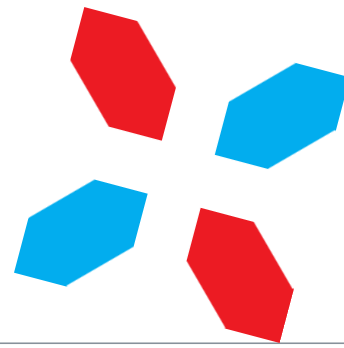
<http://www.cns.lu>

➤ Do you want to calculate your net salary in Luxembourg?

www.calculatrice.lu



Thank you for your attention!



LU  **EMBOURG**
LET'S MAKE IT HAPPEN

Contact: eures@adem.etat.lu



WELTKOMM
29